

Magnus Hirschfeld Society

The Society was founded in Berlin in 1982/83 on the occasion of the 50th anniversary of the destruction of the Institute for Sexual Science.

The Magnus Hirschfeld Society sees its tasks in

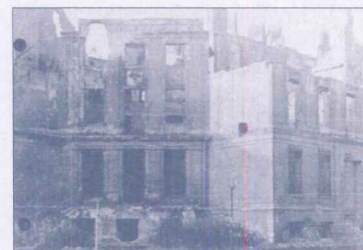
- ◆ researching the history of sexual and gender sciences as well as the sexual reform movement and its milieu;
- ◆ exploring LGBTI* history;
- ◆ establishing sexual and gender science research; and
- ◆ preserving the memory of Magnus Hirschfeld and providing a critical appraisal of his work.

Research Centre for the History of Sexual Science

In 1992, the Magnus Hirschfeld Society established a Research Centre for the History of Sexual Science. Its work is primarily based on voluntary commitment and is financed from membership fees, donations and occasional third-party funds. Since 2014, the Society has received a small grant from the Office for Equal Treatment and Against Discrimination (LADS) of the Berlin Senate.

- ◆ The Research Centre cooperates with national and international scientific institutions and organisations as well as with private individuals. The Magnus Hirschfeld Society is a founding member of the Freundeskreis Elberskirchen-Hirschfeld-Haus – Queeres Kulturhaus e.V.
- ◆ The results of the work are presented to professionals in the field and the general public in the Mitteilungen der Magnus-Hirschfeld-Gesellschaft, the publication series of the Society, in books and essays as well as exhibitions, lectures and courses at universities and other educational institutions.
- ◆ The Research Centre has a unique historical reference library on sexual and gender studies with a focus on Magnus Hirschfeld's publications and those of the Institute's staff. The collection of photographs, bequests and manuscripts documents selected chapters from the history of sexual science and the sexual reform movement; it is open Mondays 14:00–18:00 hrs and by appointment.

* Lesbian, Gay, Bisexual, Transgender and Intersexual People



Top: Office of the Scientific-humanitarian Committee (ca. 1926)

Left: Looted Books and Journals from the Institute's library, 1933

Right: The ruins of the Institute's building after 1945

Current Projects

The volunteers at the Research Centre develop and pursue their projects independently. They present results and issues of their work, as required, at working meetings of the Research Centre, inviting also external researchers.

Currently, the main focus is on

- ◆ research into the history of the homosexual movement after 1945 and the Institute's links with Scandinavia;
- ◆ biographical research of the Magnus Hirschfeld family and the staff of the Institute;
- ◆ overview of the Institute for Sexual Science; transgender persons at the Institute;
- ◆ preparations of editions and exhibitions of Magnus Hirschfeld's guest book in exile and the diary of Eugen Wilhelm / Numa Praetorius; and
- ◆ the relationship between sexual science and population science (estate bequeathed by R. R. Kuczynski).

The Magnus Hirschfeld Society participated in the celebrations to mark Magnus Hirschfeld's 150th birthday on 14 May 2018 (exhibition in Charlottenburg City Hall, official ceremony in Haus der Kulturen der Welt) as well as in the presentation of the Hirschfeld postage stamp in July 2018. It also held a series of Rainbow Lectures. On the occasion of the 100th anniversary of the Institute's establishment, the Society organized the international ALMS (Archives, Libraries, Museums and Special Collections) Conference in Berlin in 2019. Such projects are supported, fully or in part, by Stiftung Deutsche Klassenlotterie Berlin, the Capital Cultural Fund as well as by Aktives Museum Faschismus und Widerstand and the Hannchen Mehrzweck Stiftung.

Detailed descriptions of our work, current projects and events as well as bibliographies can be found on our homepage.



Membership and contact information

The work of the Magnus Hirschfeld Society is recognized as charitable and is financed by tax-deductible membership fees and by donations. Members and supporters of the Magnus Hirschfeld Society regularly receive our journal „Mitteilungen der Magnus-Hirschfeld-Gesellschaft free of charge.

- ◆ I would like to become a member of the Magnus-Hirschfeld-Gesellschaft e.V. (minimum contribution € 60.- per year, reduced € 36.-)
- ◆ I support the Magnus Hirschfeld Society with a donation of €
- ◆ I just want to receive the "Mitteilungen" regularly with an invoice (single issue € 5.-, double issue € 8,20/plus shipping)

Name

Street

Postcode, City, Country

Telephone /e-mail

Date

Signature

Magnus-Hirschfeld-Gesellschaft e.V.

IBAN DE46 1001 0010 0470 5311 07 / BIC PBNKDEFF

Payments with Paypal are possible on the MHG website



Magnus-Hirschfeld-Gesellschaft e.V.

Taubenstraße 1, D-10117 Berlin

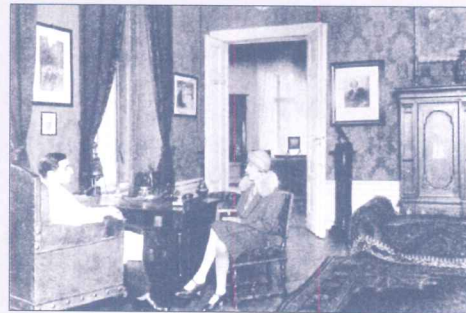
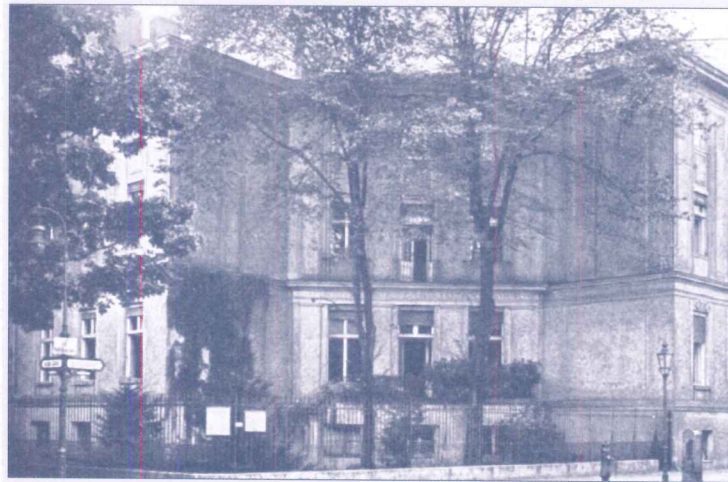
Tel x49-(0)30-441 39 73

Fax x49-(0)30-44 35 76 67

mhg@magnus-hirschfeld.de

www.magnus-hirschfeld.de

Library open Mondays 14 – 18 hrs



Top: Institute building in Berlin-Tiergarten (1919–1933) /
left: Practice sign / Magnus Hirschfeld and Li Shiu Tong /
right: Dr. Felix Abraham counseling a transvestite (1929) /
Karl Giese teaching in the Haeckel Hall

Sponsored by



Landesstelle
für Gleichbehandlung –
gegen Diskriminierung
Fachbereich LSBTI

Magnus Hirschfeld Society



Research Centre for the History of Sexual Science